



FWF

Der Wissenschaftsfonds.



**BEYOND
HOT NIR**

APRI – ETHICAL CONSIDERATIONS FOR APRI RESEARCH & OUTREACH



APRI Meeting 26.11.2024

Jakob Abermann, Gerti Saxinger



universität
wien

APRI science communication & ARPI research interaction with society

**Science for and with society –
today's state of the art in international Polar science policies**

- Inform the public about research activities and findings
- Create societal benefit – large scale & local scale

Ethical considerations in natural and social sciences

Some of us are unsure aboutwhat is „right or wrong“
.... why is research ethics relevant if I do not directly work with people....

Some of us are annoyed by „wokeness“ in research ...

**Doing research ethics is a process and
should be seen as chance for innovation
and joy!!**

Ethical implications in working with individuals and society

- Of course: we want to interact with all local people **respectfully**.
- But sometimes we can **fail unintentionally** through lack of knowledge and awareness.
 - Consider the specific **colonial** history and
 - de-colonial claims for **self-determination** of Indigenous people in the Arctic
 - Respect ALL local people's principles „**nothing about us without us**“

Why ethics is relevant in all research fields?

- **Indigenous people's criticism:** knowledge exploitation/extraction, colonial encroachment of land and communities for the sake of research, lack of local benefits of research activities, scientific knowledge not reported back to the communities

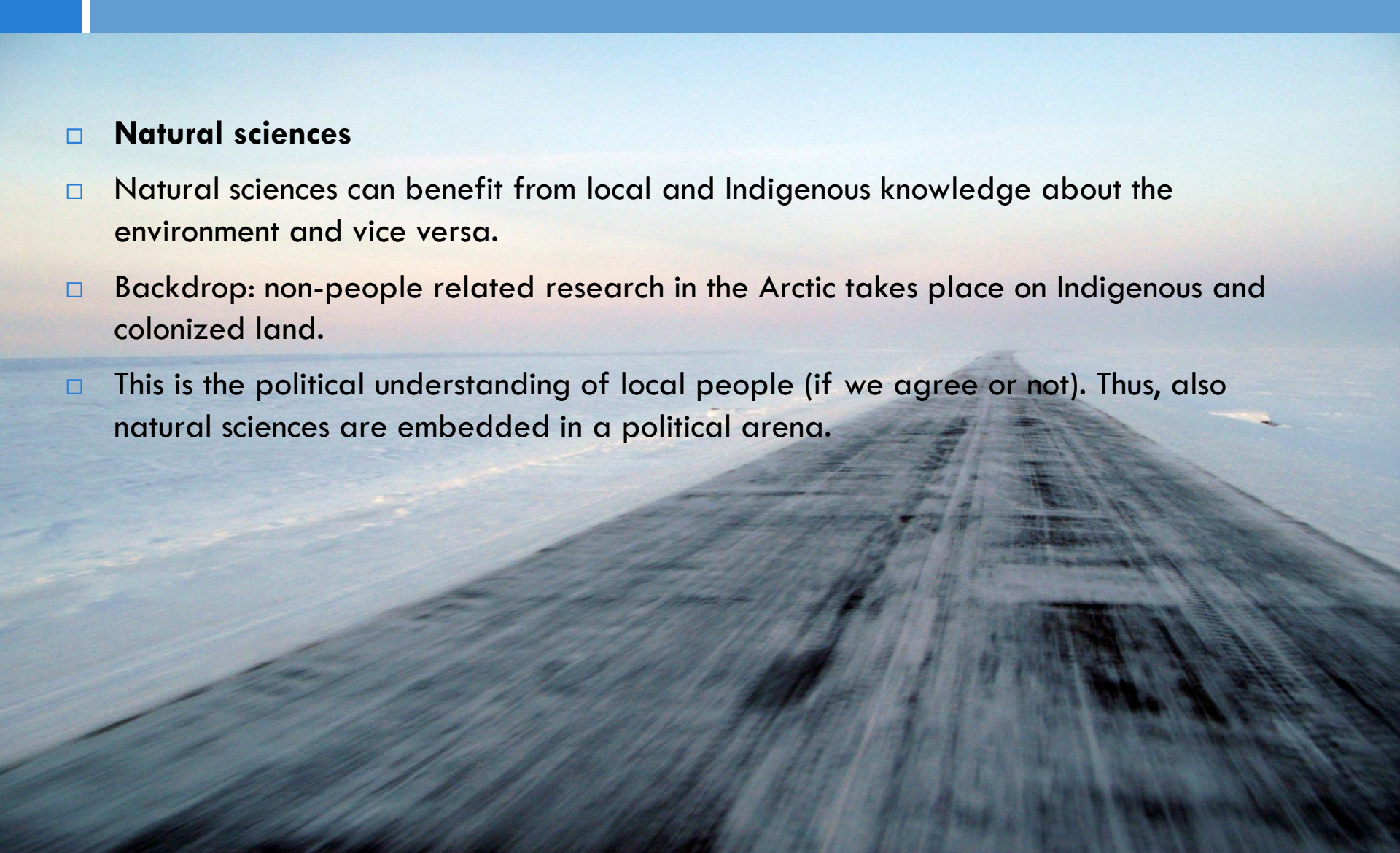


Why ethics is relevant in all research fields?

- **Social sciences**
- from working *about* people to working WITH people. Leaving behind backward science understanding of people being research-*objects* and *-matters*.

Why ethics is relevant in all research fields?

- **Natural sciences**
- Natural sciences can benefit from local and Indigenous knowledge about the environment and vice versa.
- Backdrop: non-people related research in the Arctic takes place on Indigenous and colonized land.
- This is the political understanding of local people (if we agree or not). Thus, also natural sciences are embedded in a political arena.



Why ethics is relevant in all research fields?

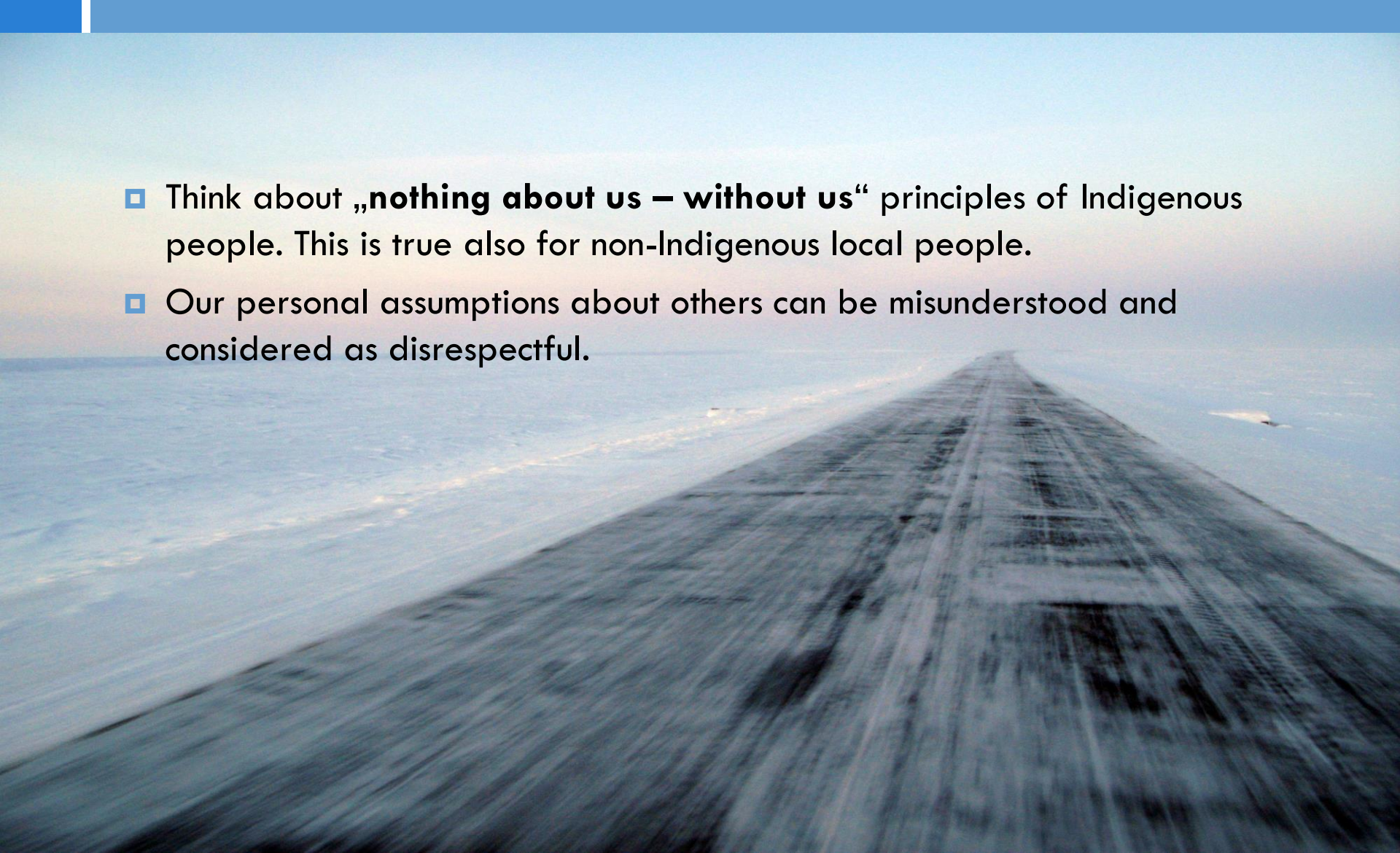
- **Co-creation of knowledge**
- Consider local, Indigenous and traditional knowledge as enriching and relevant for innovation and advancement of integrated Arctic knowledge
- Research partnerships can have economic, scientific and societal benefit for all partners



Example:

Media and outreach as a key arena for research ethics

- Think about „**nothing about us – without us**“ principles of Indigenous people. This is true also for non-Indigenous local people.
- Our personal assumptions about others can be misunderstood and considered as disrespectful.



Example:

Media and outreach as a key arena for research ethics

Can the APRI community agree on the following?

Suggestions for minimal principles in **APRI** media, outreach & research

- ▣ No photographs of persons who are recognizable. Or only in cases where clear consent given.
- ▣ Reflect before publication: Am I describing **Polar Research** or am I describing **Personal Reflections**?

- ▣ We suggest:
 - ▣ if talking about people and society: use **only** research based statements – this is relevant for both: natural sciences and social sciences.



Contents



Research – the road to progress

Greenland's National Research Strategy

2022 — 2030



nis.gl/wp-content/uploads/2023/01/english-book.pdf00

The scope of the research strategy

The vision and goals for research in Greenland

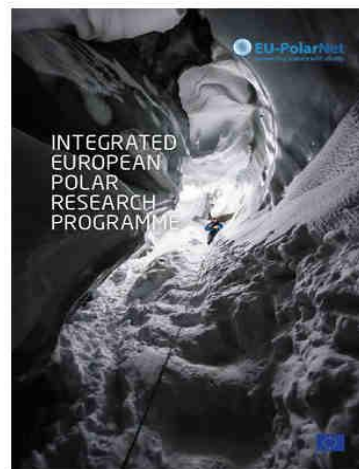
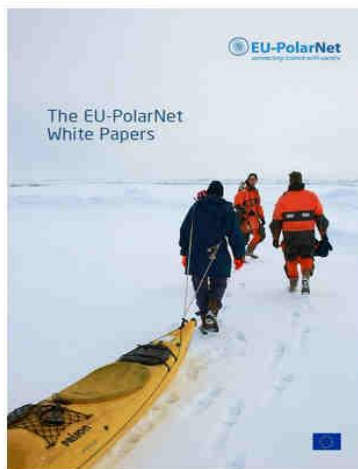
1. **Research must be anchored in Greenland**
 - 1.1. Research institutions must continue to expand
 - 1.2. An improved overview of research activities
 - 1.3. Ethical guidelines must define the parameters of research
 - 1.4. Increased use of indigenous and local knowledge
2. **Research must support sustainable social development**
 - 2.1. Research must find solutions to future challenges
 - 2.2. Research must contribute to business development
 - 2.3. Research must be an attractive career option
 - 2.4. The scope of research must be documented
3. **Research results must be easily accessible to all**
 - 3.1. Data must be handled according to open science principles
 - 3.2. A research portal will provide an overview and access to data
4. **Research efforts must be at an international level**
 - 4.1. More funding must be allocated to research
 - 4.2. International research cooperation must be enhanced

Comprehensive Policy-Brief to the EU Commission

ROADMAP TO DECOLONIAL ARCTIC RESEARCH



Photo: Arvu



Example:

Media and outreach as a key arena for research ethics

NEW APRI BOARD

We suggest to initiate an open and structured discussion about ethics in ARPI research and outreach

Create a section on the website with useful material on co-creation of knowledge and research ethics