

Activities Working Group Heinz

Petra Heinz

Department of Palaeontology

AG Palaeo-ecosystems, University of Vienna

<https://palaeontologie.univie.ac.at/en/research/palaeoecosystems/>

We investigate foraminifera, including benthic foraminifera in polar areas and oceans.



Erik Wolfgring
Post doc



Kamila Faizieva
Prae doc



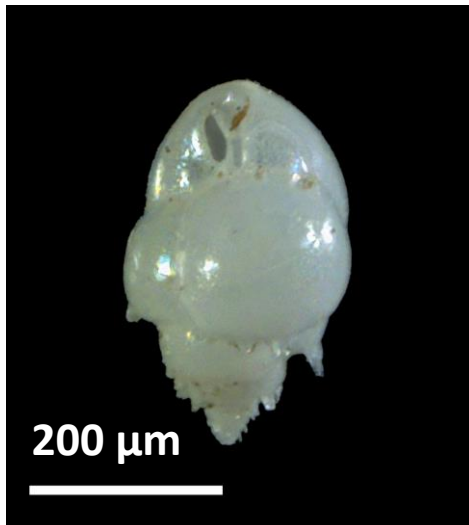
Tina Palme
Prae doc



Matthias Nagy
Technician

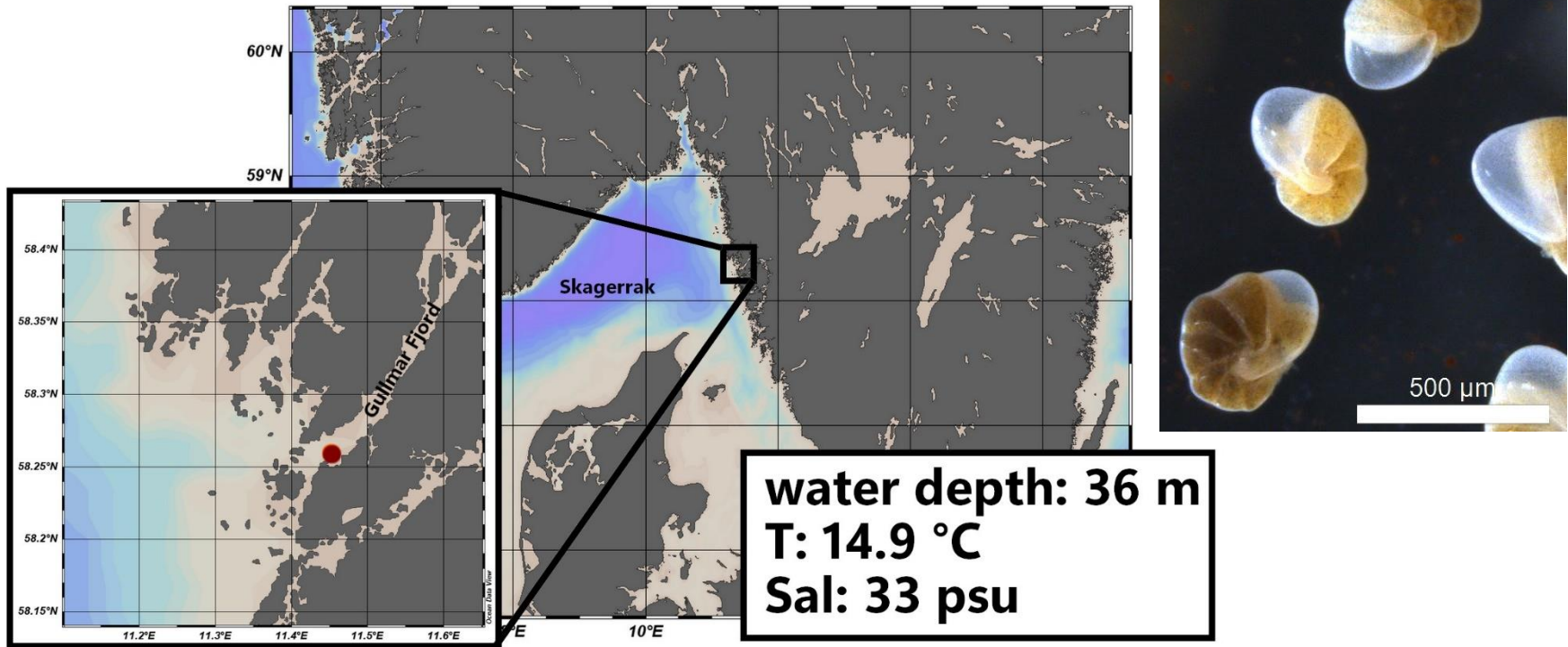
Foraminifera:

- Unicellular, mainly marine, 50 μm – several cm
- Precambrian – recent
- Benthic and planktonic species, commonly with a shell
- Good indicators for environmental parameters



Ongoing work with arctic foraminifera:

Foraminifera – new species arriving in Gullmar Fjord, Sweden

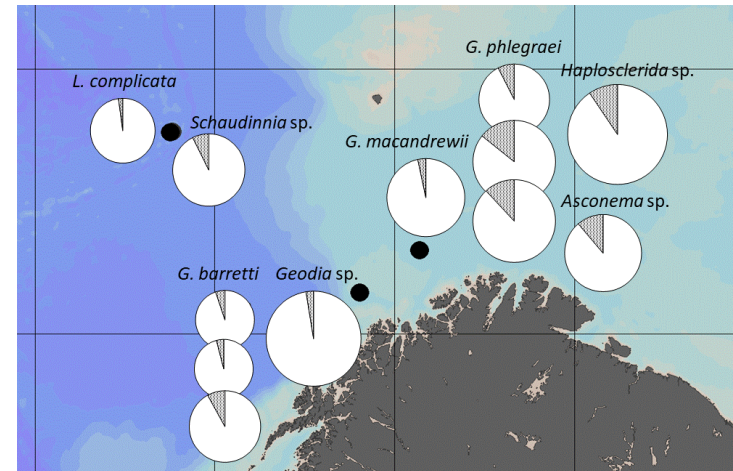
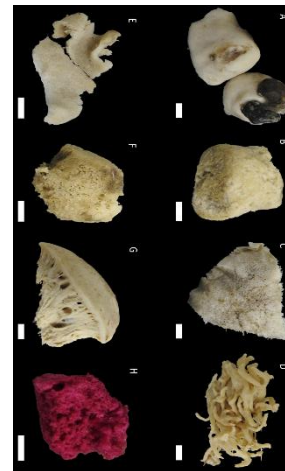
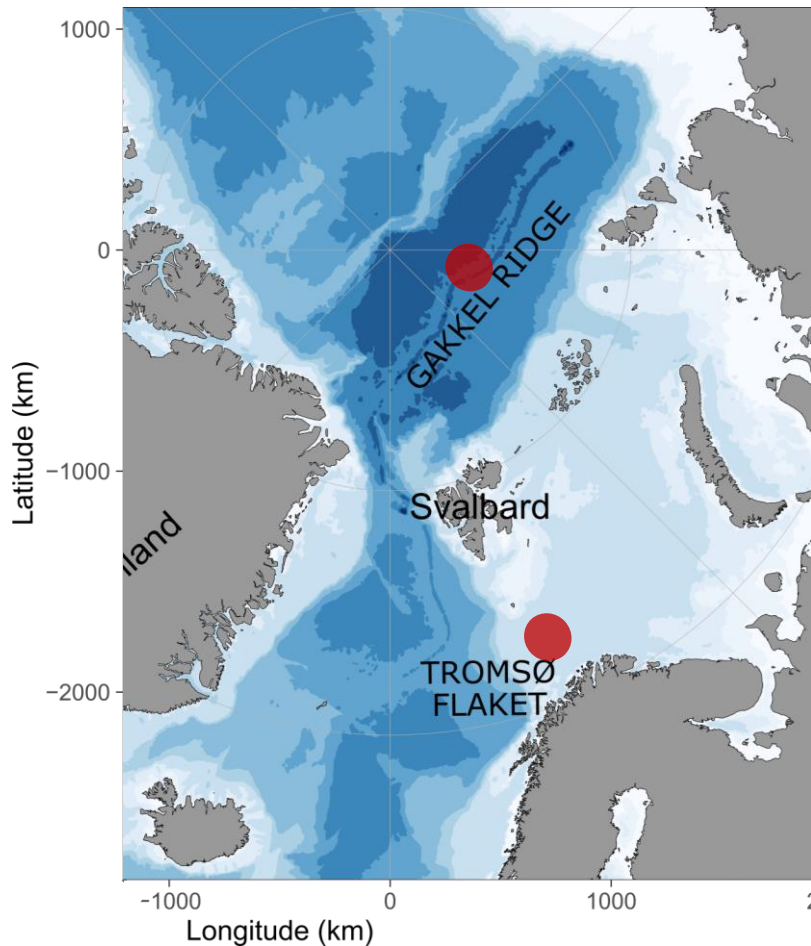


- Appearance of non-indigenous species → lab experiments to unravel its ecological role & potential advantage in changing environmental conditions

Ongoing work with arctic foraminifera:

Foraminifera – sponge associations

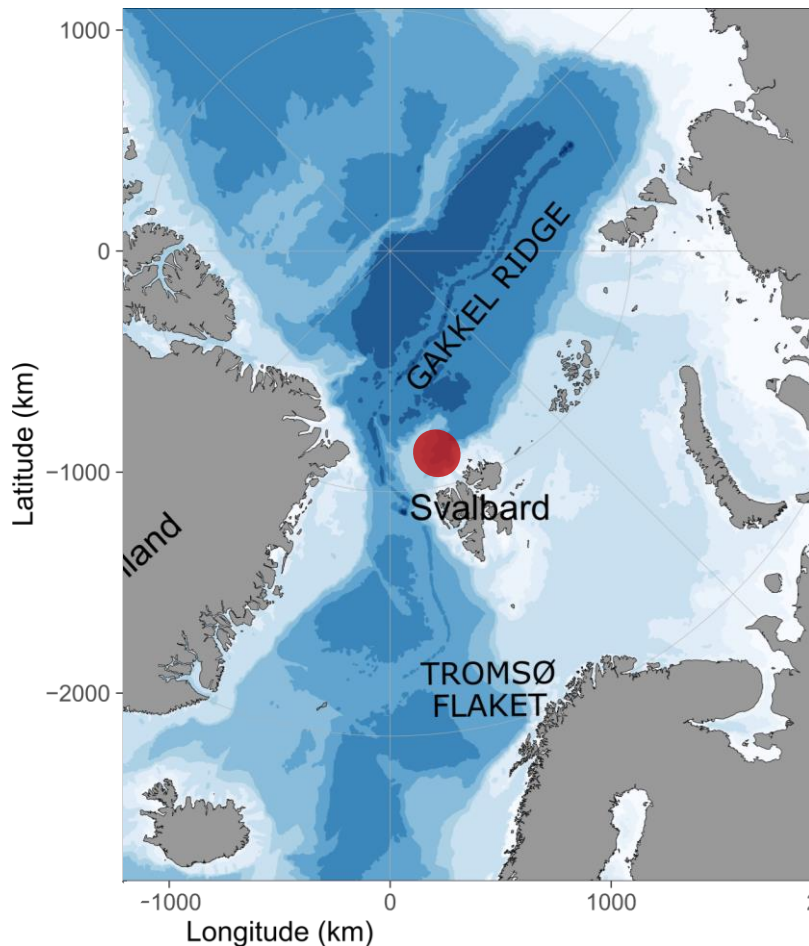
Bukenberger *et al.*, 2020



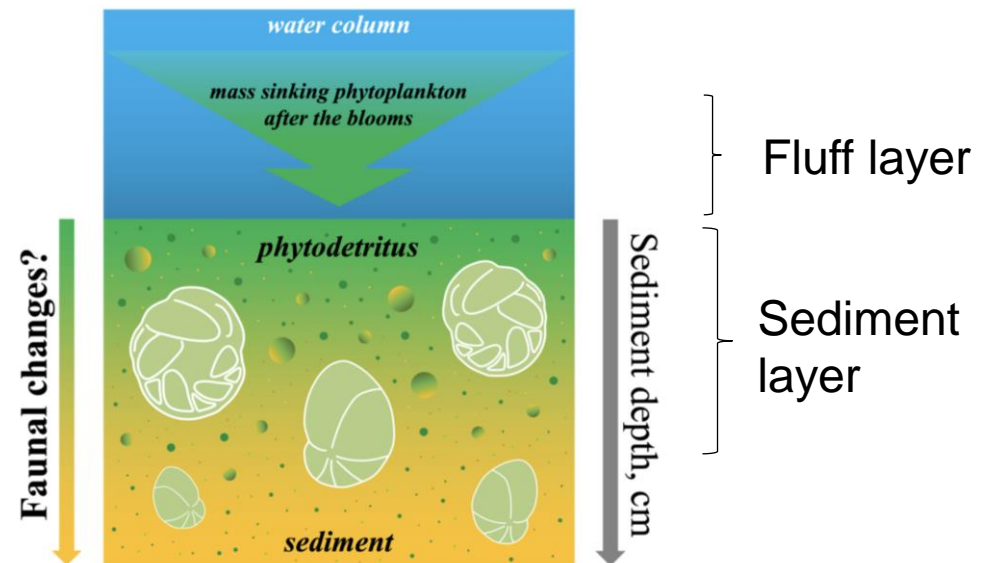
Lintner *et al.*, in prep.

Ongoing work with arctic foraminifera:

Foraminifera – phytoplankton bloom response



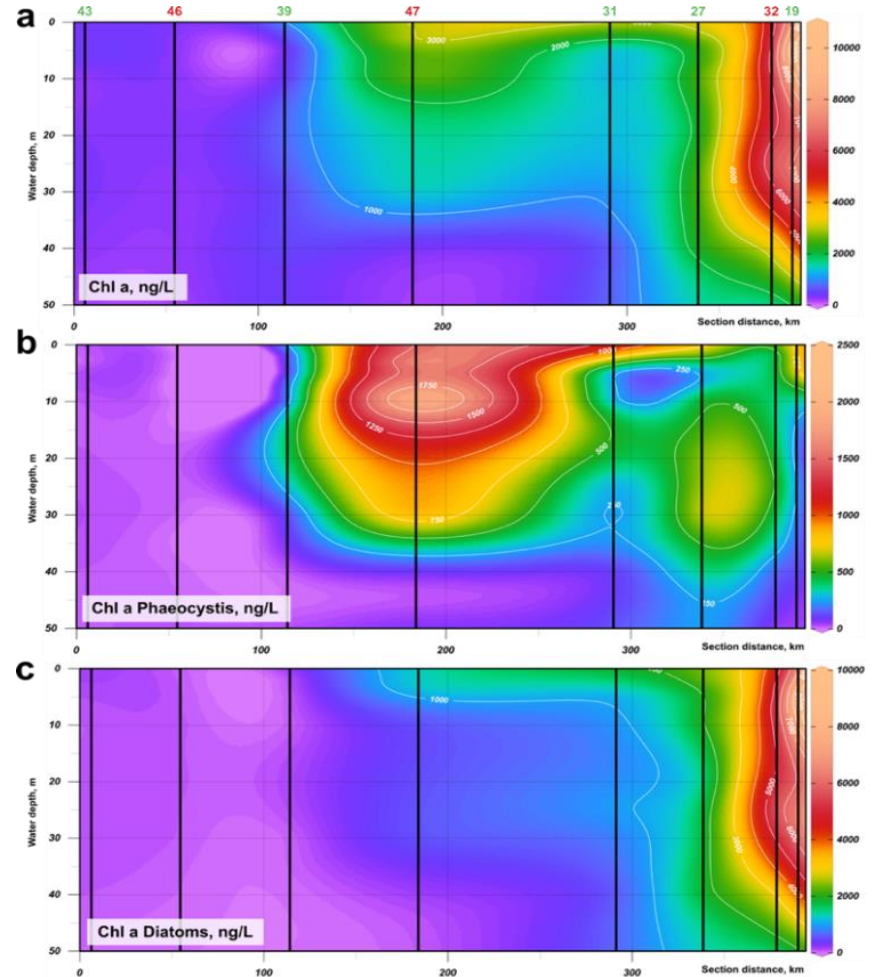
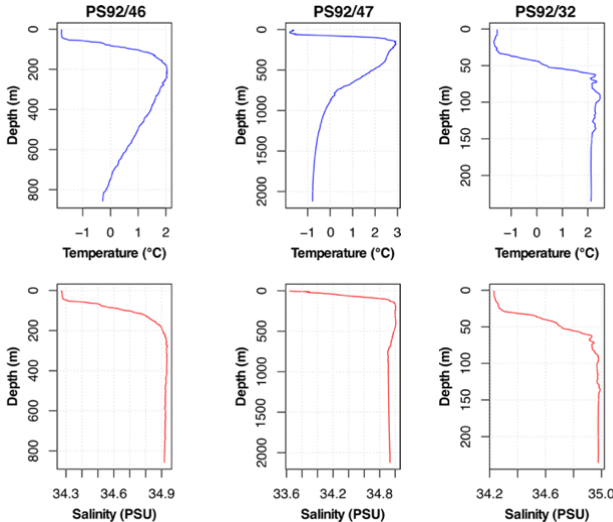
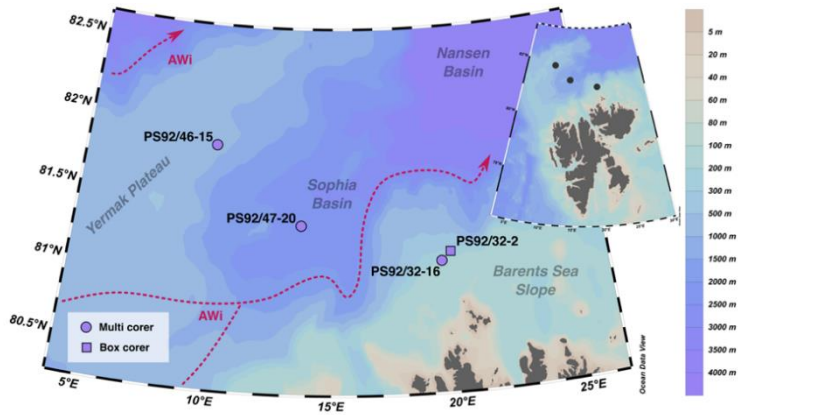
TRANSSIZ project (Arctic Ocean):
Understanding the ecology of benthic foraminifera during pulses of organic material to the Arctic Ocean bottom



Ongoing work with arctic foraminifera:

Foraminifera – phytoplankton bloom response

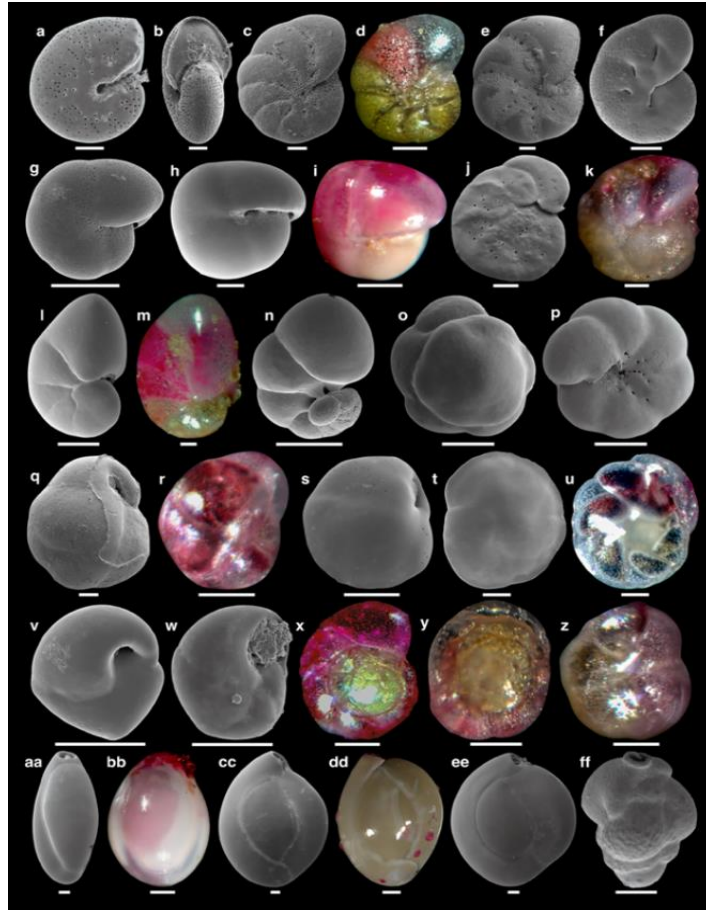
Faizieva *et al.*, in prep.



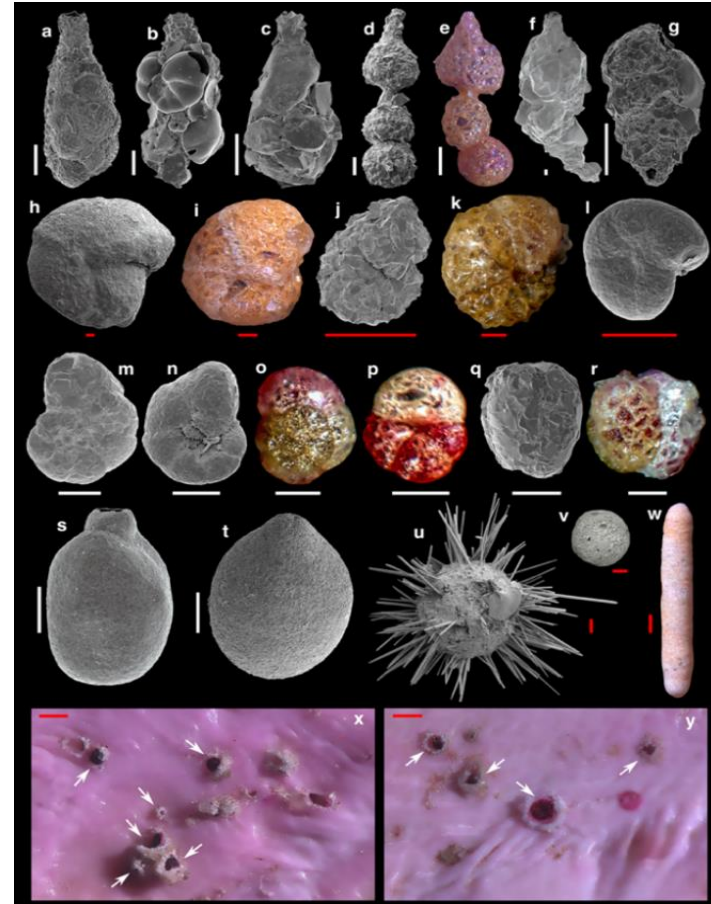
Ongoing work with arctic foraminifera:

Foraminifera – phytoplankton bloom response

Faizieva *et al.*, in prep.



calcareous

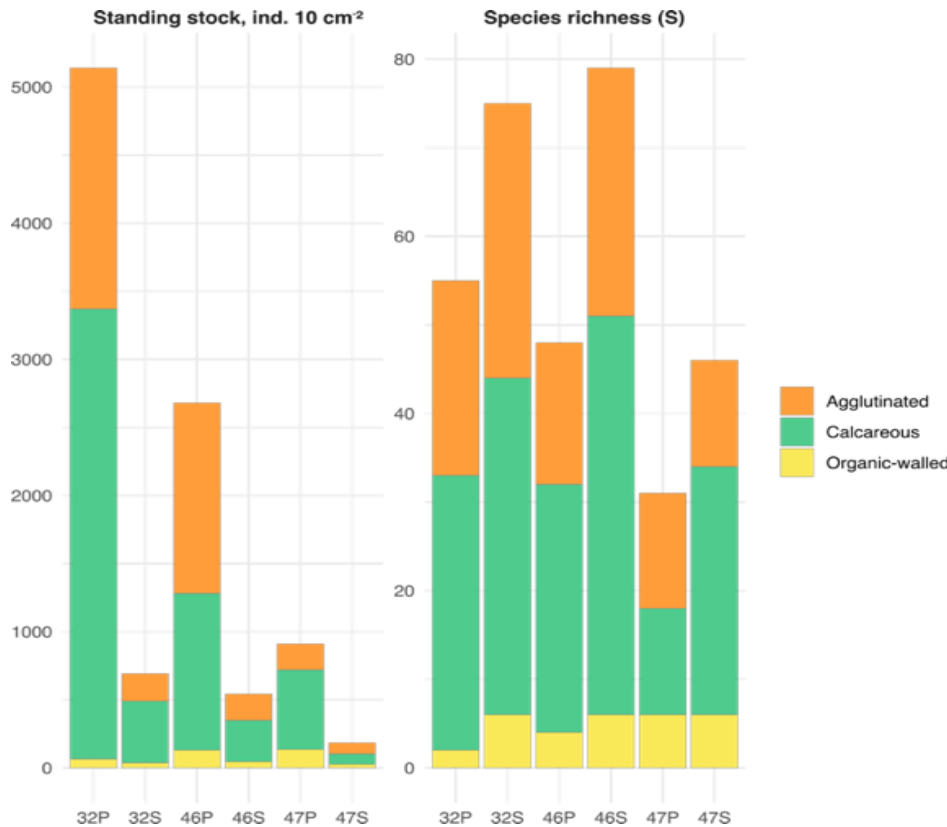


agglutinated / soft-shelled

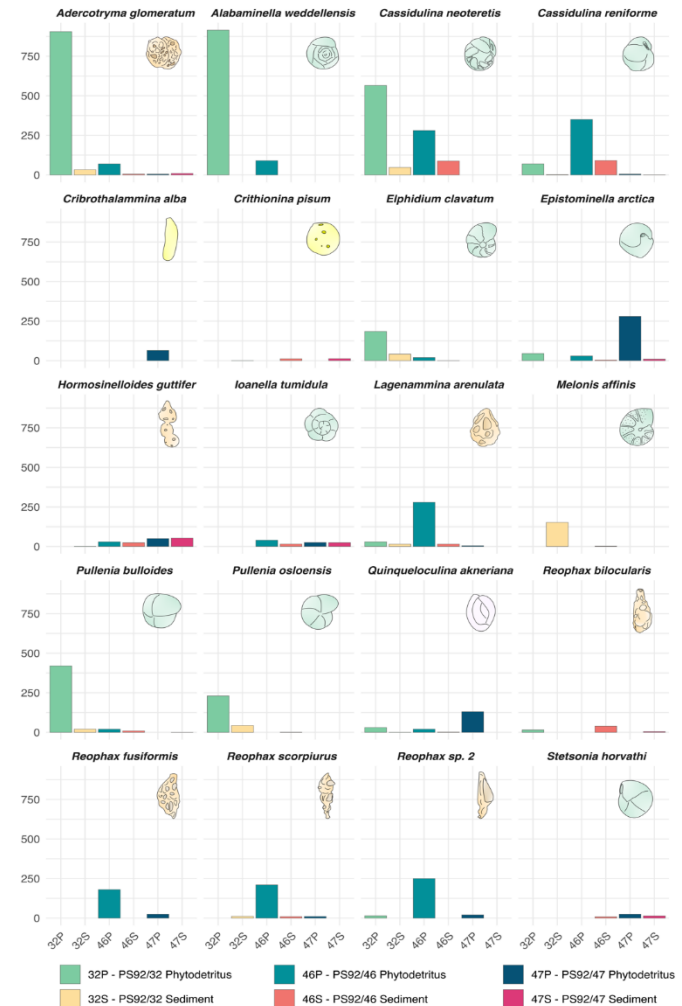
Ongoing work with arctic foraminifera:

Foraminifera – phytoplankton bloom response

Faizieva *et al.*, in prep.



from fluff (P) and sediment (S) samples



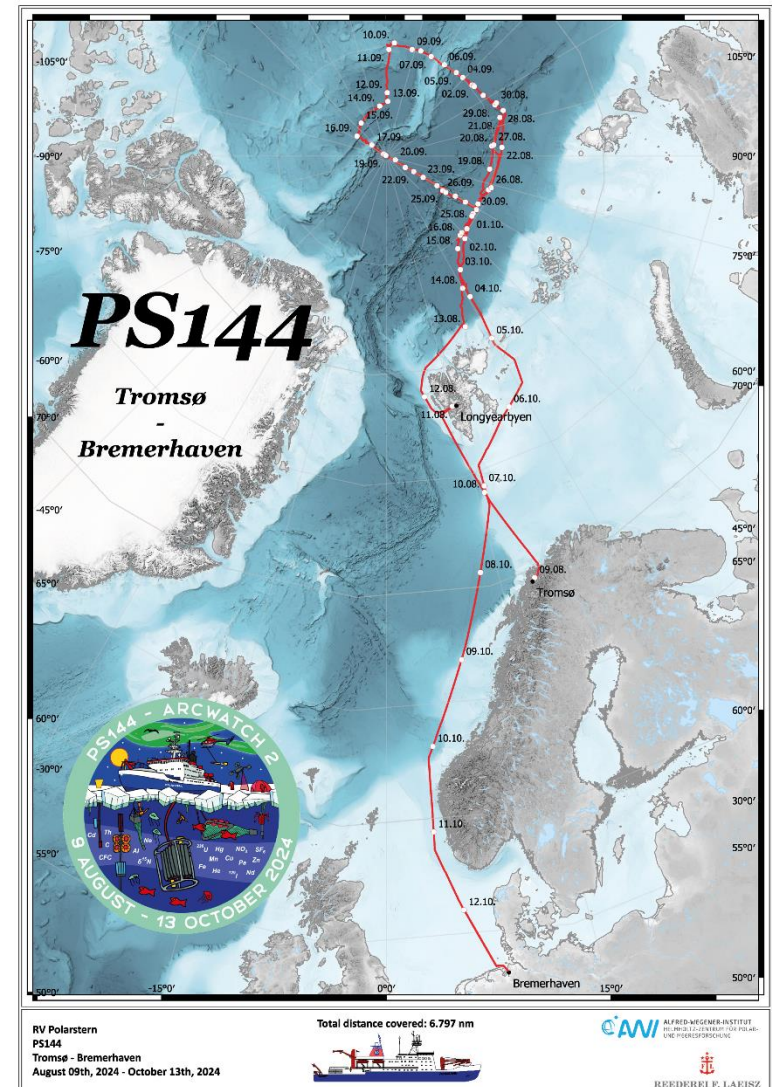
Ongoing work with arctic foraminifera:

PS 144 /ArcWatch-2 (TransArc)

9 August – 13 October 2024

Tromsø – Bremerhaven

Aim: large-scale, quasi-synoptic assessment of the Eurasian / central Arctic Ocean and the Barents Sea continental slope in the Nansen Basin.



Ongoing work with arctic foraminifera:

PS 144 /ArcWatch-2 (TransArc)



Ongoing work with arctic foraminifera:

PS 144 /ArcWatch-2 (TransArc)



Ongoing work with arctic foraminifera:

currently visiting: **Giuliana Panieri**

Professor in Geology at the Department of Geosciences at UiT Tromsø

<https://en.uit.no/ansatte/giuliana.panieri>



Ongoing work with arctic foraminifera:

Kick off meeting: „EXTREME“
science, art and social science

* aims to develop and disseminate a transformative interdisciplinary approach to studying Extreme Environments in the Arctic regions and beyond



EXTREME
ENVIRONMENTS



PI: giuliana.panieri@uit.no

granted by UArctic (UA 06/2024,
from 01-01-2025 to 31-12-2026)

Ongoing work with arctic foraminifera:

Kick off meeting: „EXTREME“

science, art and social science

12-15 January 2025

Host: Petra Heinz

EXTREME
ENVIRONMENTS

