

ÖAW

AUSTRIAN
ACADEMY OF
SCIENCES

oead

UNI
GRAZ

SNOW
2RAIN



universität
wien

Snow2Rain and Snow2School

project update

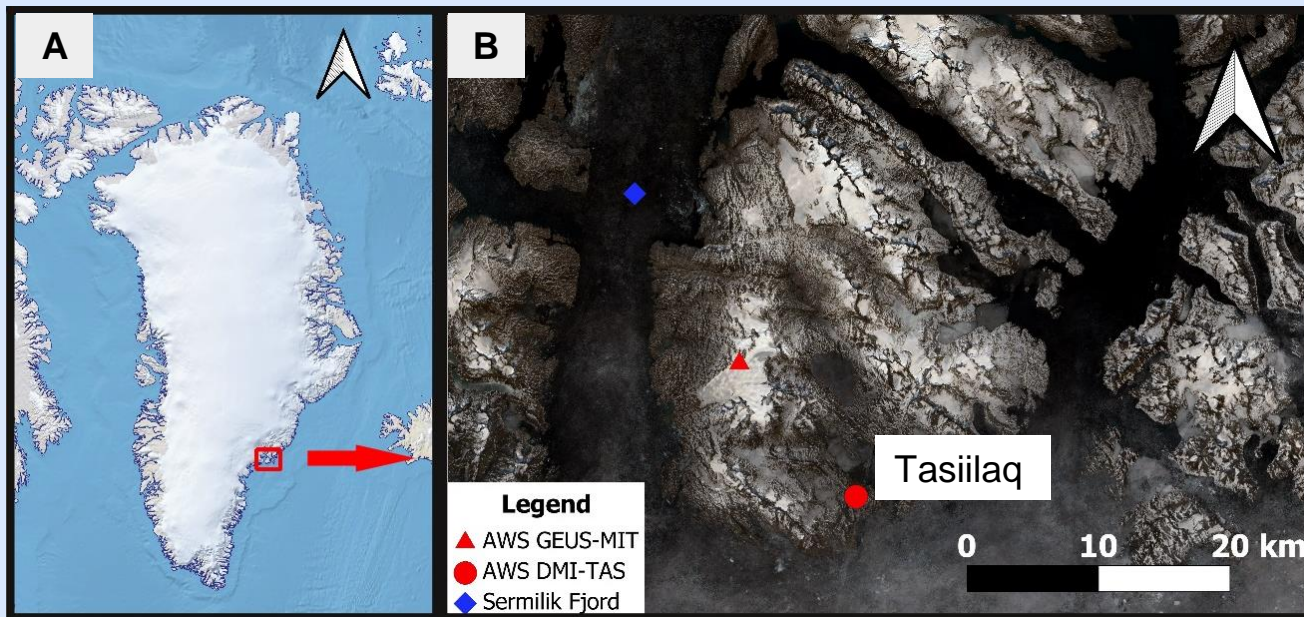


APRI Meeting 24 & 25 November 2022, Innsbruck

Wolfgang Schöner, Peter Schweitzer, Sophie Elixhauser,
Anna Burdenski and Jorrit van der Schot



Location: Tasiilaq





Snow2Rain: in short



We explore changes from snow to rain and their impacts on a local community in East Greenland.

Main aim:

- Better quantify past and future changes of snow properties in Tasiilaq
- Place those changes into the context of the lives of people in Tasiilaq

Interdisciplinary research project: combining snow climatology, anthropology and local knowledge

Project team:

University of Graz

Wolfgang Schöner
Jorrit van der Schot

University of Vienna

Peter Schweitzer
Anna Burdenski
Sophie Elixhauser



Snow2Rain: in short



How do environmental changes, in particular the **transition from snow to rain**, influence quality of life in and around Tasilaq?

Anthropology



Local expertise



Snow climatology



A combination



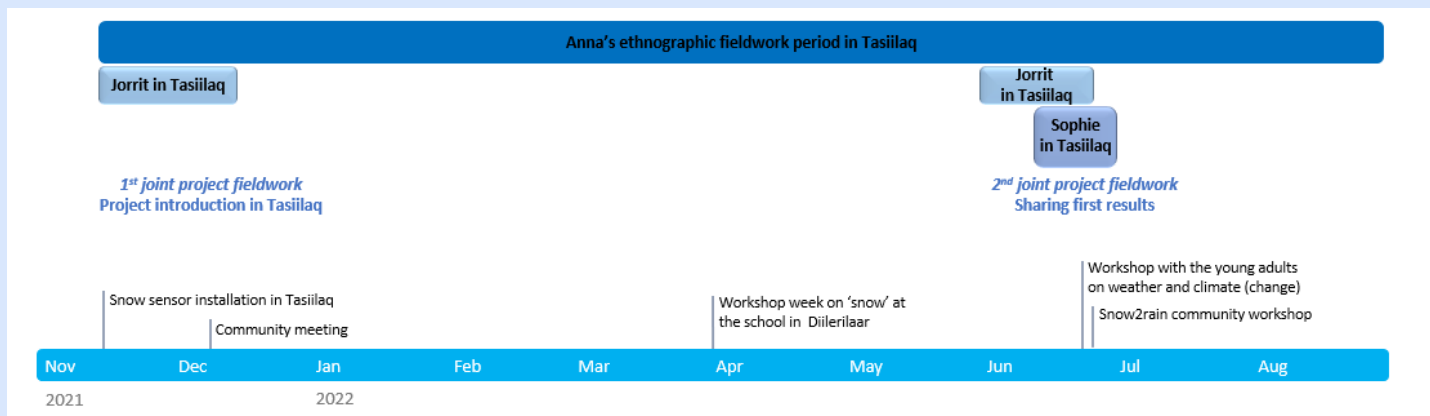


Project timeline



- 2018: Submission of project proposal
- 2020: Project start
- 2021 + 2022: Fieldwork in Tasiilaq
- 2023: Final fieldwork + dissemination of results in Tasiilaq

Timeline of fieldwork in Tasiilaq (Dec '21 – Aug '22)





Recent fieldwork activities (June '22)



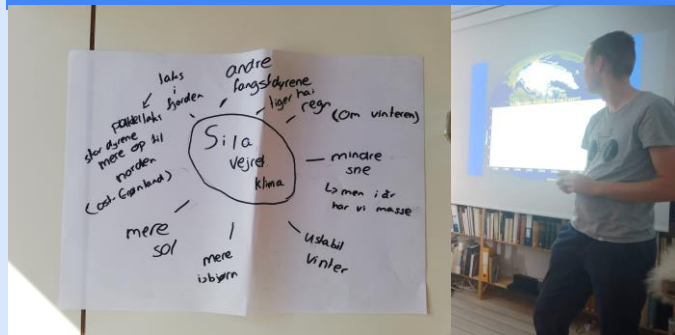
Establishing a relationship with people



Workshop Snow2Rain



Workshop Climate Change with local youth



And also:

- Snow workshop in Tiniteqilaaq
- Visit to the new Sermilik research station
- Giving back to the community
- Installation of a snow sensor



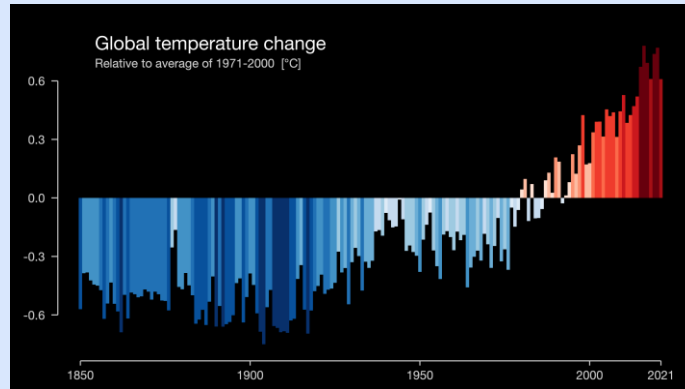
Youth workshop climate change (22th June '22)



A tension of time scales



Daily weather patterns (Nov-Dec '21)



Long-term climatic changes



Snow2Rain workshop (23th June '22)



Sharing key research results:

- Temperature increases
- (Summer) precipitation changes
- Glacial recession and thinning
- Challenges in daily life: high amounts of snowfall last winter

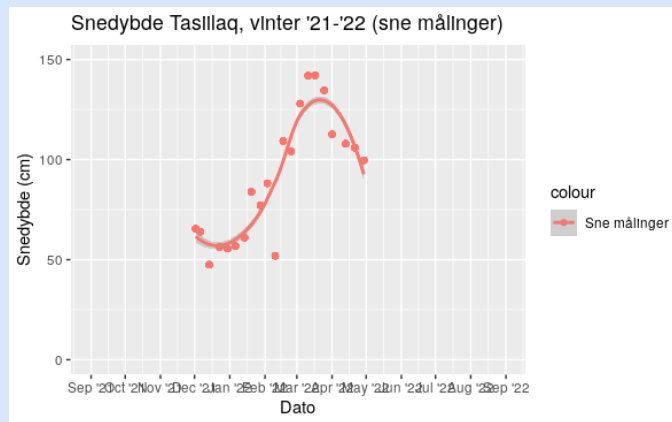
Input from local people:

- Increase in earthquakes
- Seal migration
- Changes in sea ice
- Perspectives on high snowfall amounts
- Feedback





Snow measurements





Outreach



- Project website with occasional blog posts
www.snow2rain.com
- Facebook
www.facebook.com/snow2rain
- Instagram
_snow2rain
- APRI news articles
<https://www.polarresearch.at/into-the-snowy-realm/>
<https://www.polarresearch.at/exploring-changes-in-snow/>
<https://www.polarresearch.at/immersing-into-the-snow/>
- Artic Hub news article
<https://arctichub.gl/annas-mission-is-to-make-weather-research-useful-for-the-people-of-east-greenland/>
- Other blog posts
<https://kontrapunkte.hypotheses.org/5116>
- The Arctic Institute Bookshelf Podcast recording (to be released)



Future outlook for Snow2Rain



- Three scientific papers
 - 1 Interdisciplinary
 - 1 Anthropological
 - 1 Climatological (currently in review)
- Arctic Science Summit Week 2023:
 - Session: Youth & Arctic climate change
- Final fieldwork period: dissemination of results to local people in Greenland



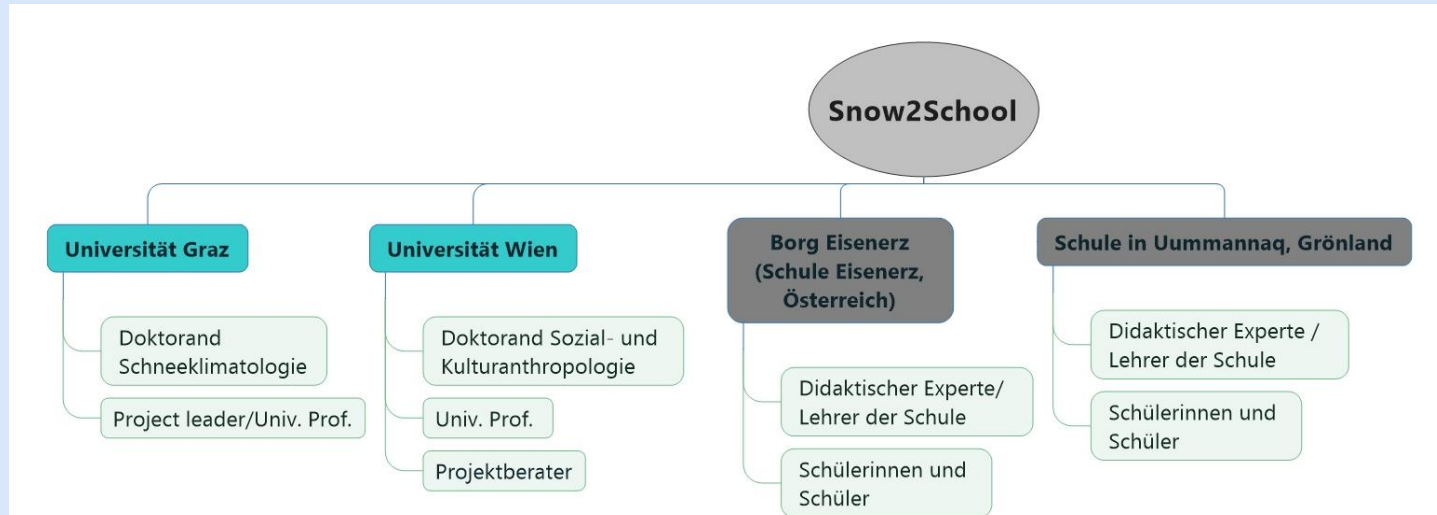
Snow2School



A citizen science project on the topic of snow changes

Main aims:

- Better quantify the changes in snow conditions in Greenland (Uummannaq and Tasiilaq) through a new reconstruction method based on photographs.
- This method will be developed and tested in Eisenerz, Austria
- Gain a better understanding of the impact of snow changes on the life of people in Greenland (Uummannaq and Tasiilaq) and in Austria (Eisenerz).



Thank you!



<https://www.snow2rain.com/>



Snow2Rain



_snow2rain



info.snow2rain@gmail.com

