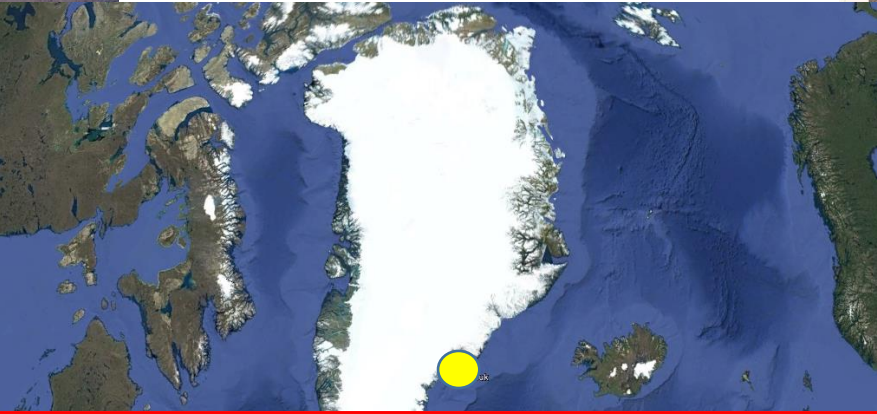


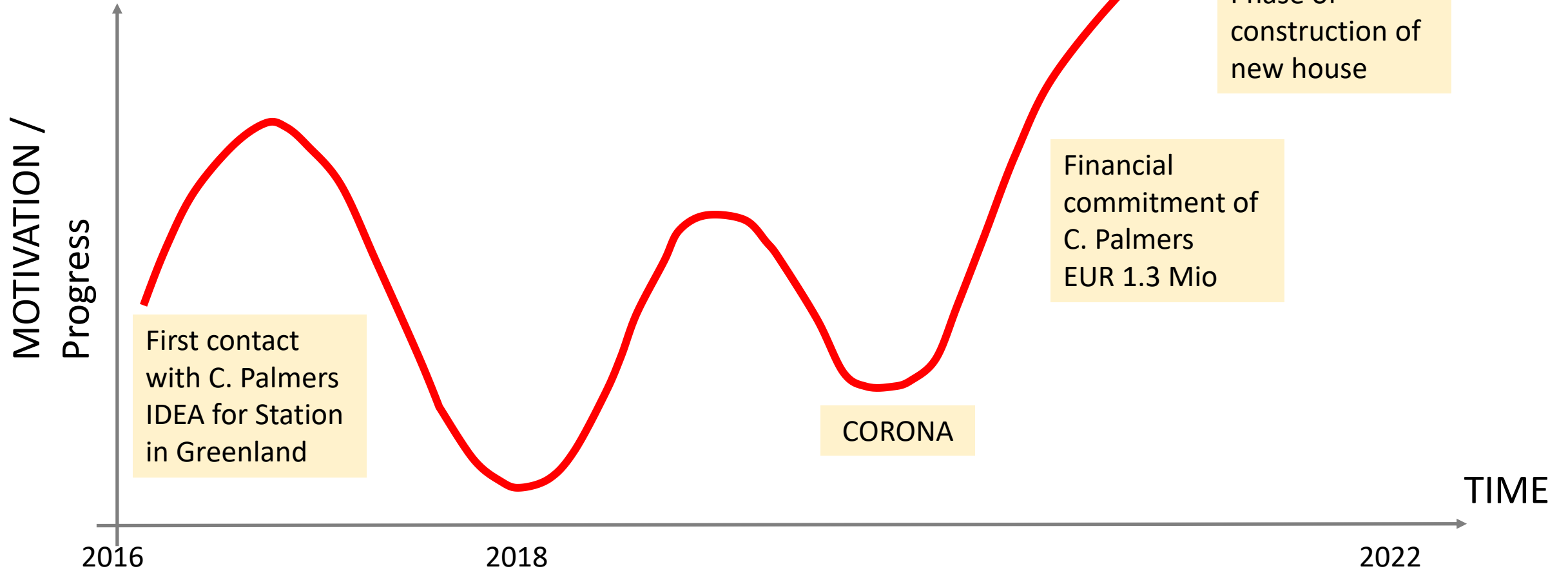
Danish-Austrian Research Station **SERMILIK-STATION (East Greenland)**



Austrian Polar Station Sermilik - Tasiilaq



Timeline of Austrian-Danish Polar Station @Sermilik



Sermilik Station

Status and possibilities for extension and modernization of facilities

Technical report from a visit at Sermilik Station, Southeast Greenland, 8 – 11 August 2019

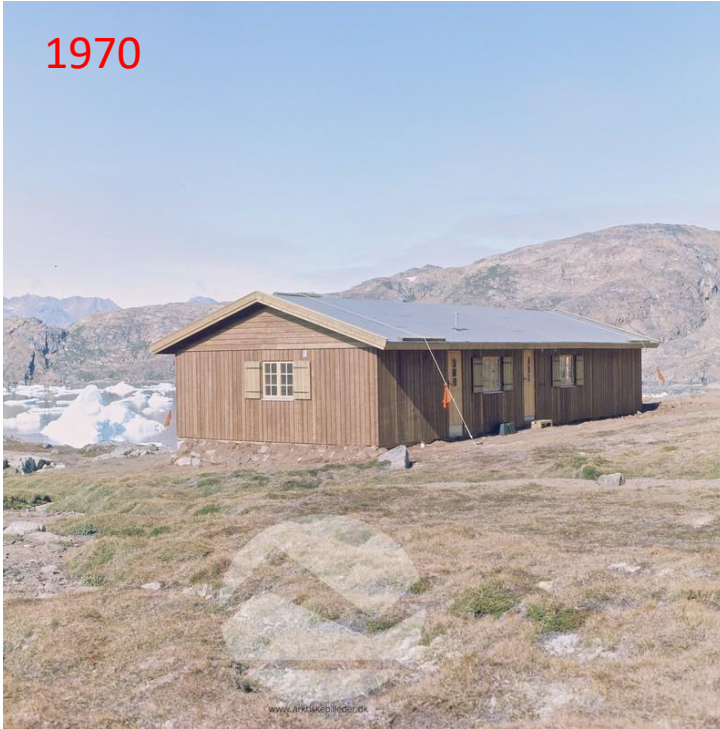
Morten Rasch
Department of Geosciences and Natural Resource Management
University of Copenhagen



Department of Geosciences and Natural Resource Management
University of Copenhagen
November 2019

History of Sermilik station

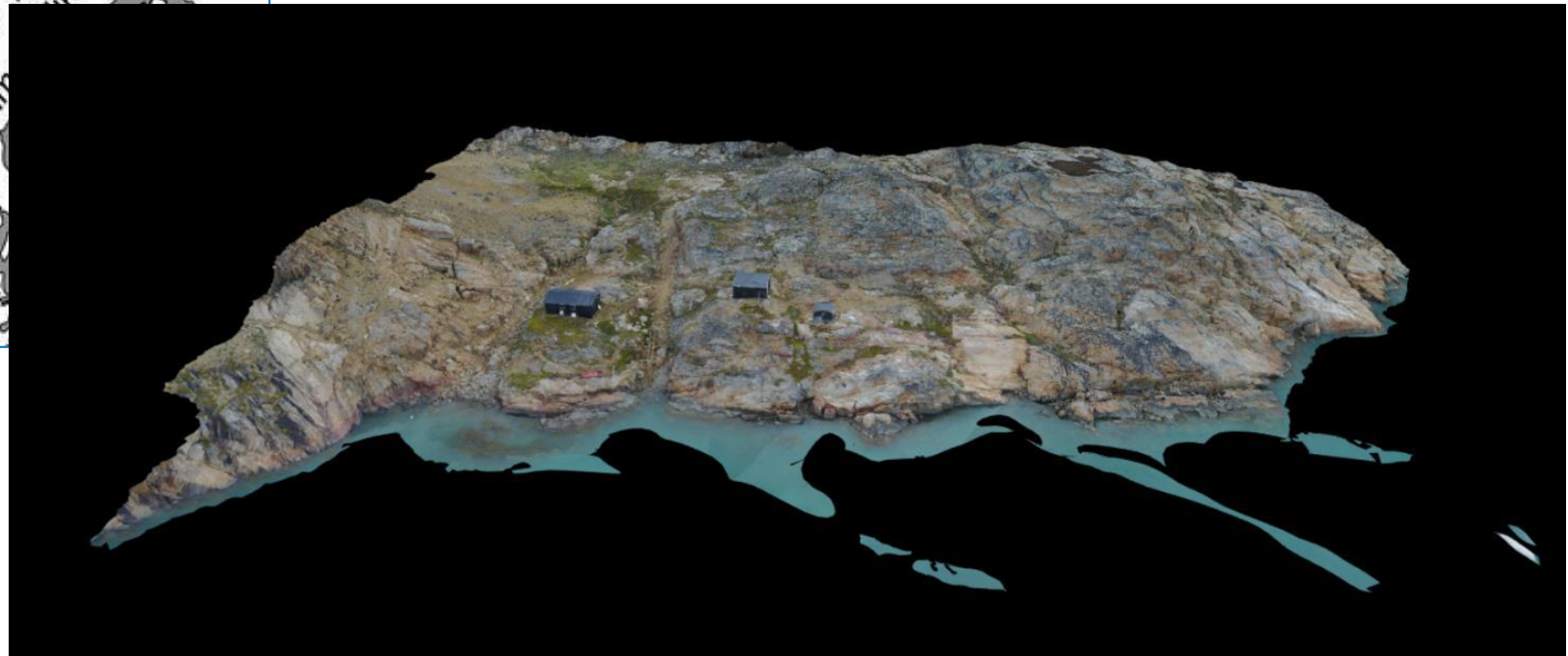
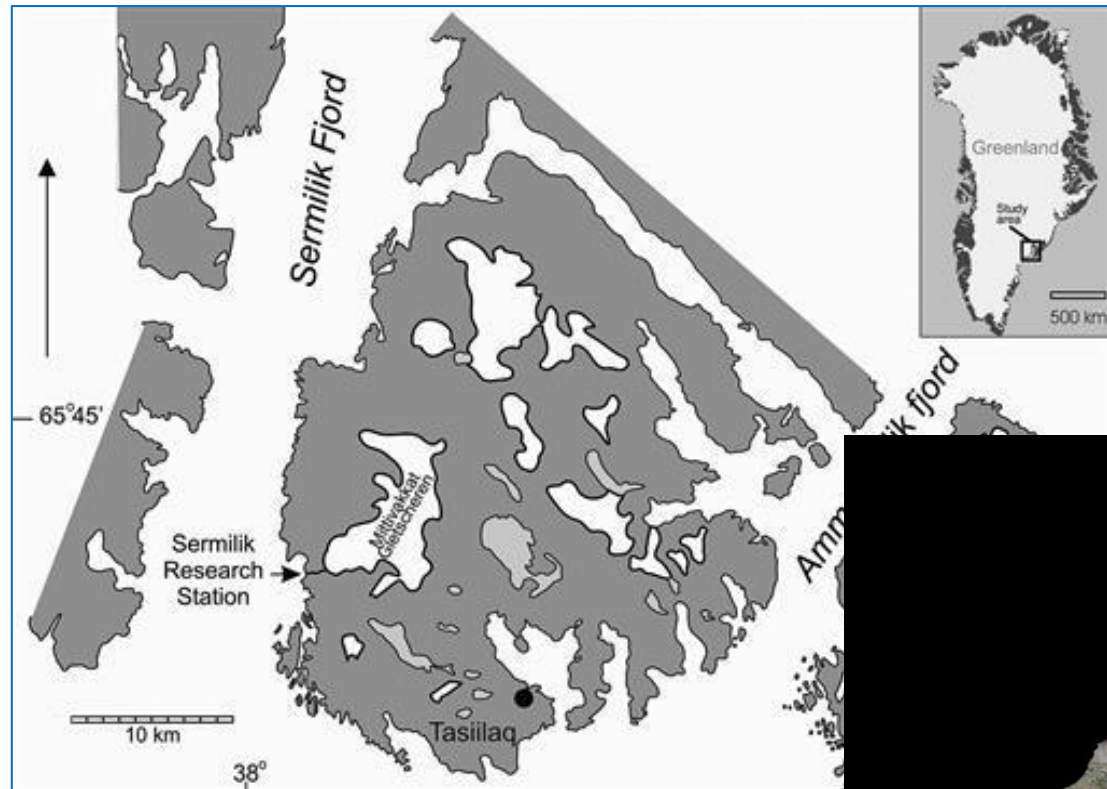
1970



1972



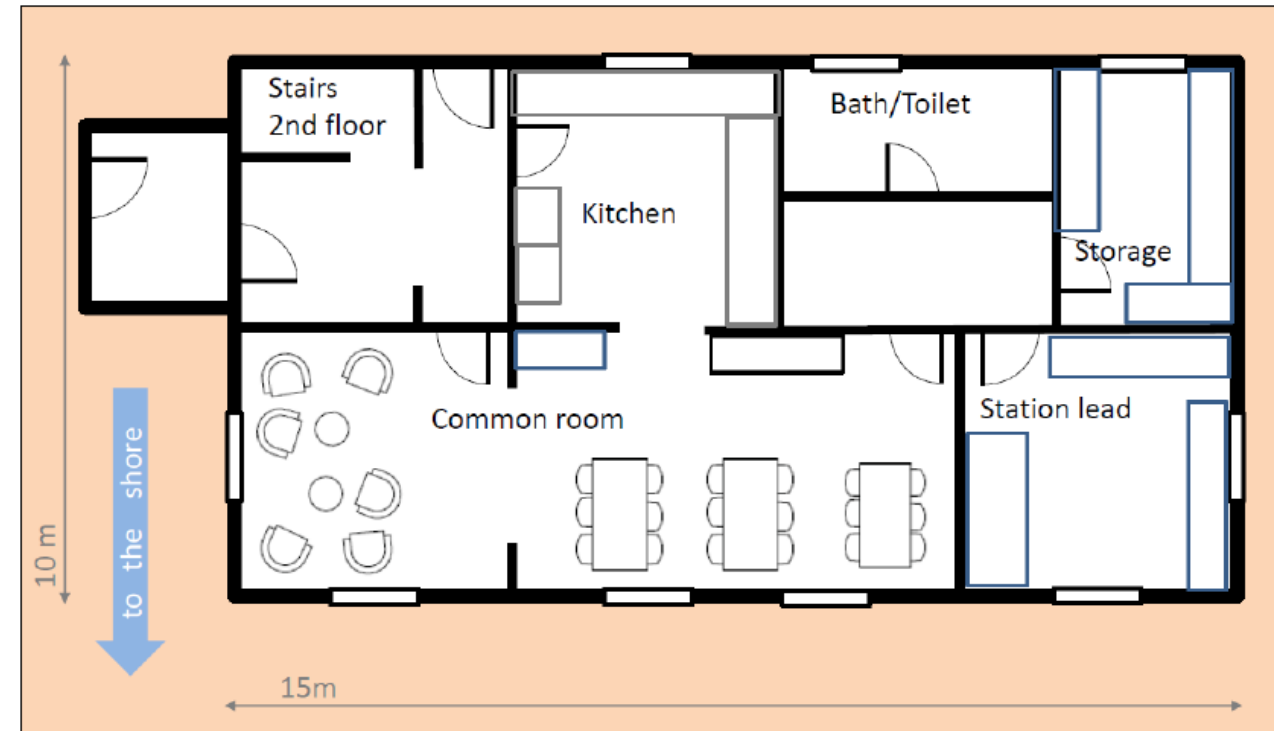
Sermilik Station (the existing Danish station)



Sermilik Station project



Ground level



Photographs from summer 2022

3/8/2022



2/9/2022



22/9/2022

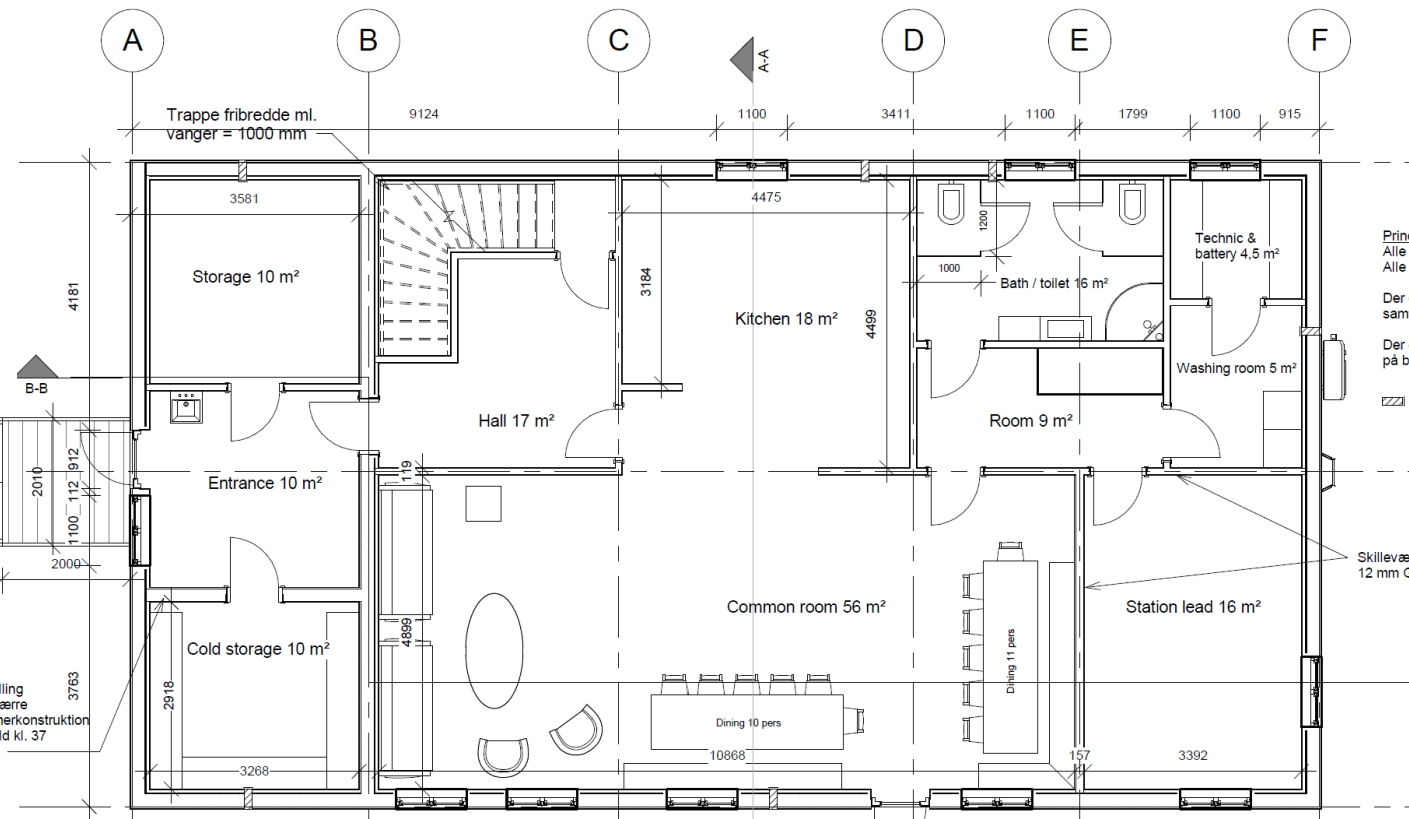
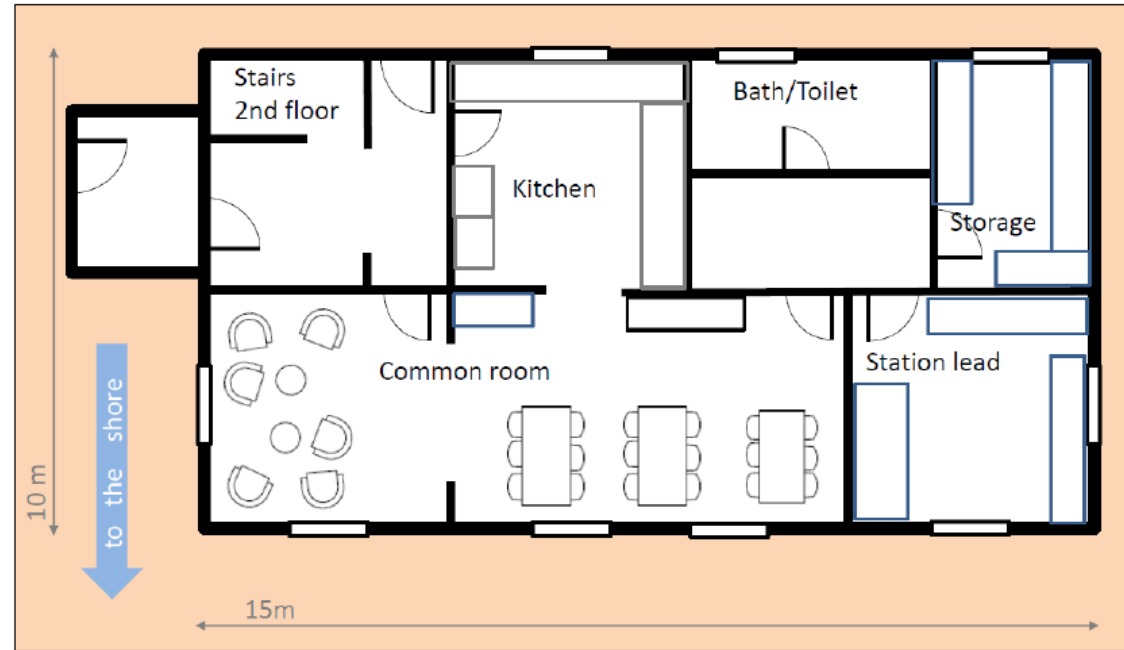


14/10/2022



Interior planning before and now

Ground level



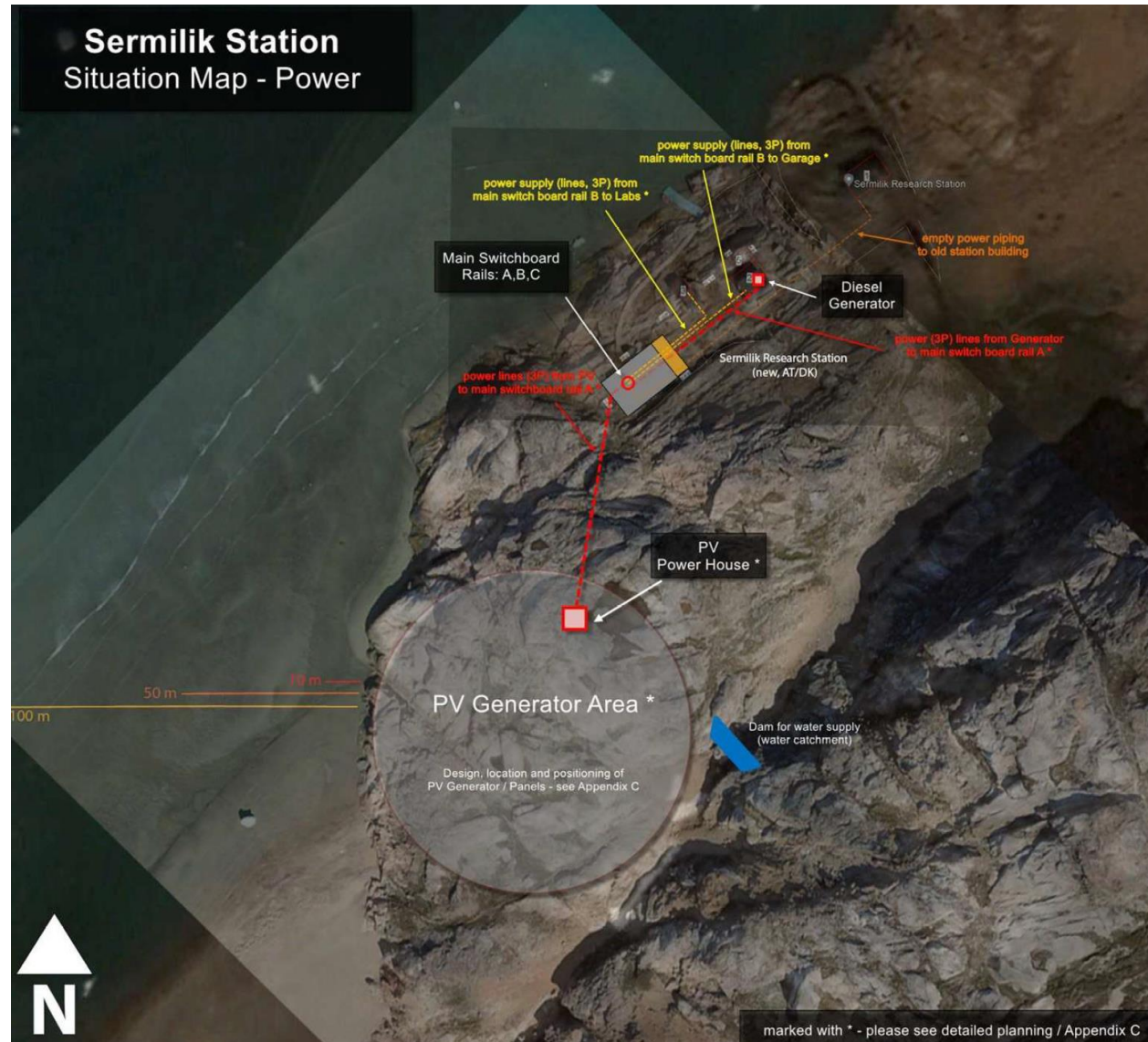
Exterior cladding 10142

Isoleret skillevæg
 12 mm krydsfiner
 19x95 mm forskalling
 0.20 mm dampspærre
 45x195 mm tømmerkonstruktion
 195 mm mineraluld kl. 37
 12 mm krydsfiner

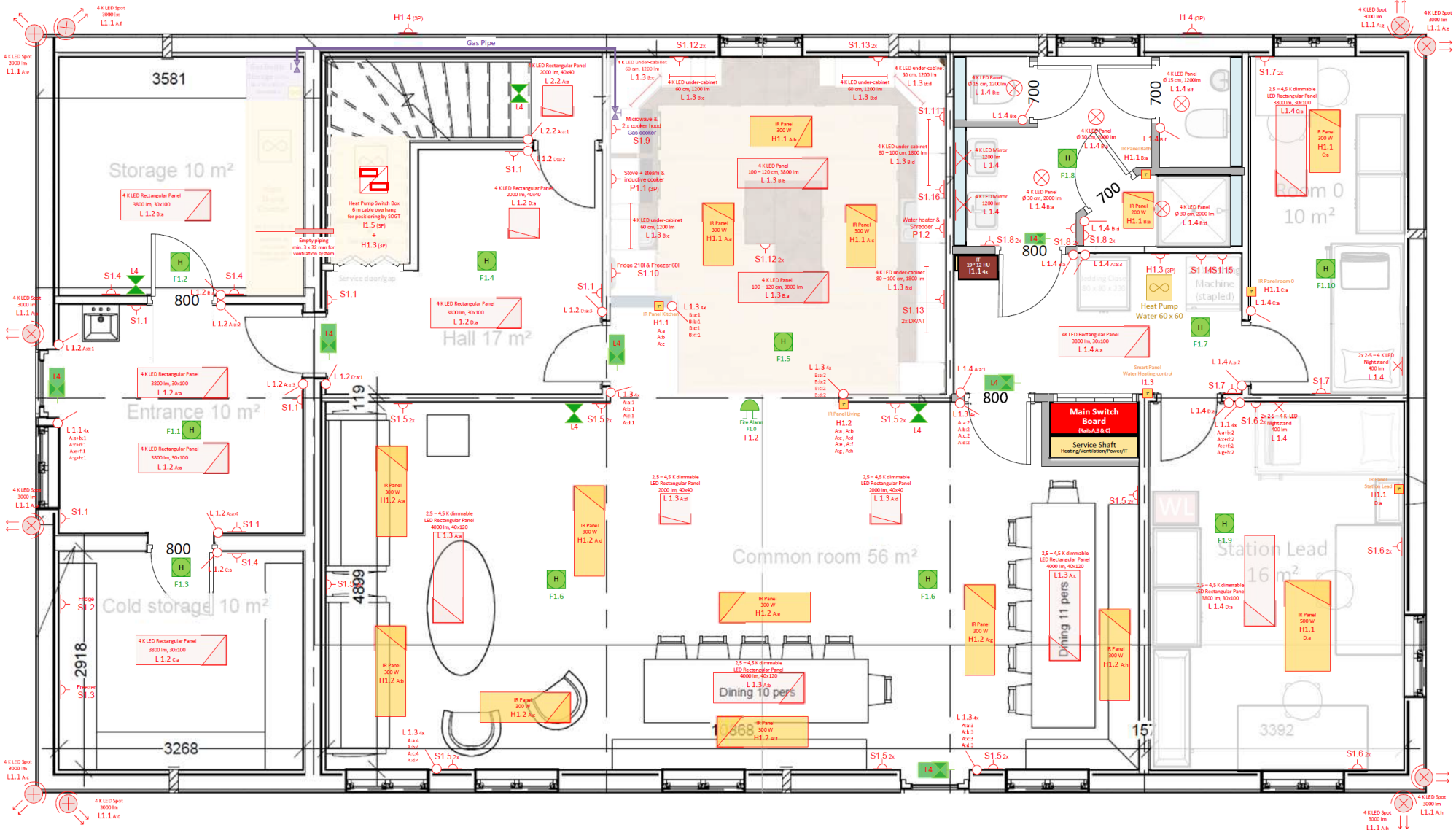
The new station building finalized ...



Technical planning (energy, water, ...)



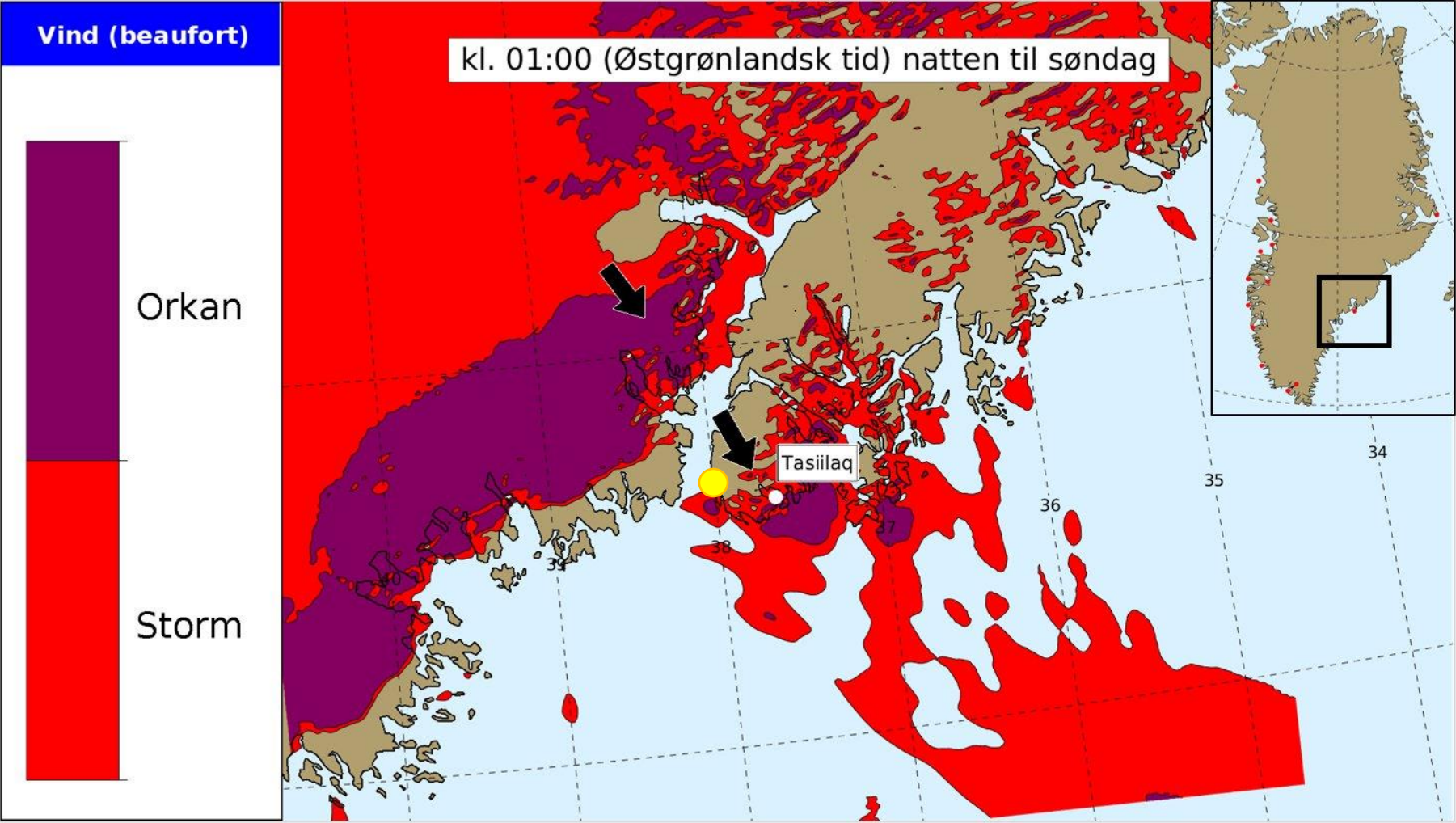
Technical planning (energy, water, ...)



Furniture e.g. kitchen



Piterağ summer 2022



Outlook 2023:

- PV, (diesel) generator, water supply (tank system), wiring, piping inside der house (power, light, shower, toilette, ...), furniture, ...
- Research programme in cooperation with Uni Copenhagen and other partners
- Official opening

