

Wilderness tourism on Svalbard: ethnographic views



Dear visitors of the ice cave on
Larsbreen, please follow these
simple rules while visiting the
cave.

1. Pick up all your garbage and bring it back to town
(it does not belong in the nature)
2. Leave the ice cave in a good condition (no
breaking of icicles, carving on the walls)
3. Please do not go to the toilet inside the cave.
4. Please remember to put the door back in front of
the entrance
5. If you see that the steps are disappearing, please
spend 5 minutes to help us maintain them
6. We have trips up here every day between 11:00-
12:30, please show respect (since we build igloos
and maintain the cave throughout the season)

Kind regards,
Svalbard Wildlife Expeditions







Visit Svalbard

[Visit Svalbard movie](#)

[Visit Svalbard](#)

- Minisjokolade
- Nøtter & frukt
- Rosiner
- Kjekes
- Karkoser
- Sottetost
- Pølsestuffer
- Te

- Ikke ramt
- Vagner, signalfunktor & dmsd
- Kort & kompakt + 6PS
- Kommunikasjon
- Preutstyr
- Pz til båt
- DZ
- Varmelding

- 4/4 Nylon: Vignon m/14 stunde + fatorial
 Signalpistol m/5 stunde
 Smuttblaus
 - Steiger - Blaus 44
 - Nylon - Polarschnee 24
 DZ
 - Sole - 6 Polarschnee & miedelung
 - Bolle - Snow - Madonnen
 - Ketting - Stahl - Swatches

5. Navigasjon & kommunikasjon

- Stor kartagruppe + liten gruppe
kartblad kompass
GPS
Satellitt

- Satellit-Hö (ordom)
Möbel
Nackpilen på gjut
- Nr. 41-SWE
-SWS
-SSW
-Andre

Belsky, Jill M. 2000. *Changing human relationships with nature: making and remaking wilderness science*. Missoula, MT.

Cronon, William. 1996. *The Trouble with Wilderness: Or, Getting Back to the Wrong Nature*. *Environmental History*, 1: 1, pp. 7-28.

Sæþórsdóttir, Anna D., C. Michael Hall & Jarkko Saarinen. 2011. *Making wilderness: tourism and the history of the wilderness idea in Iceland*. *Polar Geography* 34: 4, pp. 249-273.







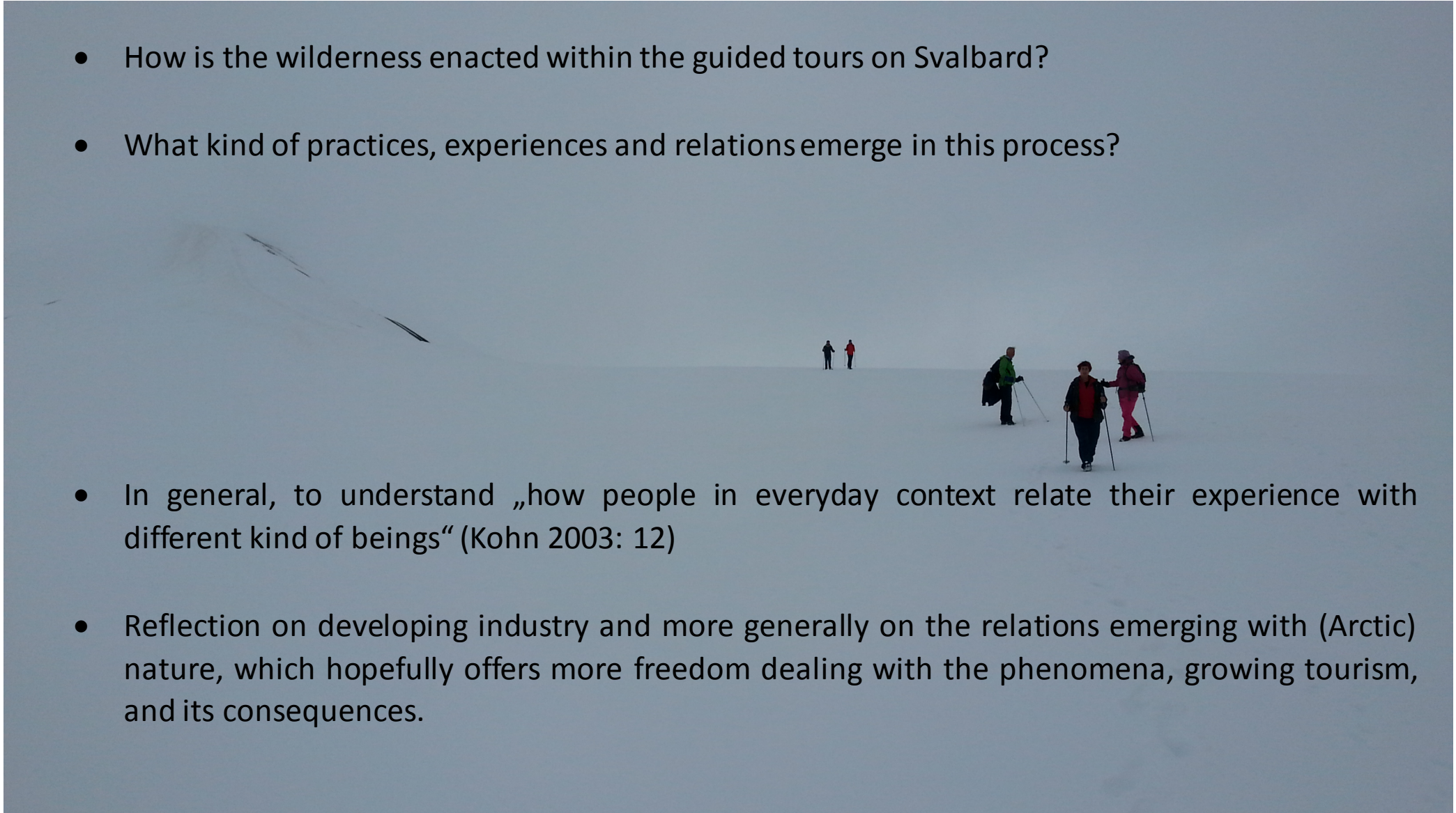
- **Latour, B.** 2005. *Reassembling the social*. Oxford: Oxford University Press.
- **Ingold, T.** 1992. Culture and the perception of the environment. In *Bush, Base: Forest Farm. Culture, Environment and Development* (eds E. Croll and D. Parkin). London: Routledge, pp. 39-56.
- **Ingold, T.** 1993. *The temporality of the landscape*. In *World Archaeology*. 25 (2): 152-174.
- **Kohn, E.** 2013. *How Forest Think: Toward an Anthropology Beyond the Human*. Berkley, LA, London: University of California Press.
- **Law, J.** 2004. *After Method: Mess in social science research*. London. Routledge.
- **Law, J.** 2004b. *Enacting Naturecultures: a Note from STS*. Centre for Science Studies, Lancaster University, Lancaster. [online] Available at <http://www.comp.lancs.ac.uk/sociology/papers/lawenacting-naturecultures.pdf>







- How is the wilderness enacted within the guided tours on Svalbard?
- What kind of practices, experiences and relations emerge in this process?



- In general, to understand „how people in everyday context relate their experience with different kind of beings“ (Kohn 2003: 12)
- Reflection on developing industry and more generally on the relations emerging with (Arctic) nature, which hopefully offers more freedom dealing with the phenomena, growing tourism, and its consequences.

Thank you for
your attention.

